

# The Process Structuring Water

By Clayton Nolte

A new technology for water treatment that utilizes nature's own methods producing cleaner, better tasting water without the use of chemicals, filters, salts, electricity or complex metal alloys for a truly maintenance free total-treatment water conditioning system.

This process softens water while leaving in all the healthful minerals standard water softeners and reverse osmosis systems remove. Not only can complex filter systems remove almost everything from water, they also remove water's aliveness, leaving one with essentially "dead" water.

This new technology employs an innovative application and advanced understanding of the vortex phenomenon utilizing the dynamic characteristic of water itself to create a "Fluid Machine" that works at the molecular level. This "Fluid Machine" alters the molecular structure of the water activating and retaining the healthful benefits of minerals and characteristics while excess suspended solids, contaminants and sediment are dynamically removed.

Specially tuned geometry creates an energy environment for water to structure itself. This gives water a lower surface tension and better hydrating properties. This geometric technology breaks up large low energy water molecule clusters into smaller high energy clusters. This innovative technology eliminates negative energy patterns (sometimes called the memory of water) and redefines the water's natural healthy energy pattern. Structured water allows us to imprint through the DNA and RNA the knowledge of its secret blue print and help one to become balanced in the universe.

The paragraphs above describe the overall principals of the Structured Water **Ultimate** specifically the aspects of; (excess suspended solids, contaminants and sediment are dynamically removed) and that of a (total-treatment water conditioning system.) The **Ultimate** is the most advanced innovative technology and it incorporates all the benefits and savings to a much greater degree than that of the Structured Water Home unit.

The **Structured Water** Commercial unit, Home unit, Under Sink unit, Garden unit and Shower units at a very reasonable price, have all the following benefits and savings also. These units don't physically remove the excess suspended solids, contaminants and sediments. However, it does protect one from those contaminants through the process of structuring all of the source components to the best of its ability.

## **Benefits & savings:**

- \* Fresh invigorating water
- \* Refreshing showers & bath
- \* Cleaner hot tubs & spas without chemicals
- \* No more irritations from pollutants
- \* Less soap consumed when washing
- \* Skin & hair looks & feels better
- \* Prevents dry itchy skin
- \* Wonderful anti aging properties
- \* Improves health, less joint & muscle pain, more energy
- \* Increased Potential Hydrogen (PH) 7.5 +
- \* Improves quality of life
- \* Promotes long life
- \* Increases absorption of medications, vitamins, & minerals
- \* Clear, harder ice cubes
- \* Vigorous plant growth
- \* Greener lawns less fertilizer
- \* Less chlorine required for pools
- \* Reduced corrosion & deposits
- \* Reduced odors around/in bathrooms & toilets
- \* Removes existing calcium & aragonite deposits—spotless dishes
- \* Prevents & removes corrosion & increases the life span of pipes, hot water heaters, dishwashers, swamp-coolers, water heating systems, ice makers, etc.
- \* Improves ability of plants to withstand lower freezing temperatures
- \* Cleaner healthier fish tanks
- \* Less algae growth in ponds & lakes
- \* Cut flowers last longer
- \* Healthier livestock & pets
- \* Improved crops & garden growth (bio-mass increased 27% to 40%)
- \* Improved aerobic bacterial activity in all septic & sewage systems
- \* Reduces anaerobic bacteria
- \* Better tasting coffee & juices

## Infinite Possibilities

1. The exchange between nature's systems always creates a surplus of energy.
2. Water exists within almost every religious system as the expression of man's connection to the inner harmonies and rhythms in nature.
3. Man became dysfunctional with the harmony of nature during the advent of civilization.
4. Water is the great mediator between the energetic and material world, between that of pure light and that of matter.
5. Water has no inherent form of its own; water embraces the form of everything it comes in contact with.
6. Water becomes the carrier of life, the chief communicator channel between life energies.
7. Water is the accumulator, transmitter and transducer of energies and is continually transferring life processes from one system to another in its helical evolutionary manner.
8. The connection with water was lost by man when he turned from internal insight, which comes through nature's rhythms and energies of life cycles around us.
9. The explosive hydrocarbon technologies are raping the earth of its oxygen resources at an alarming rate.
10. The wonder of oxygen with its ability to capture and transport non-vectorized or feminine quality life force energies is our single greatest resource.
11. The depletion of oxygen overshadows all other pollution concerns.
12. Water has the ability to hold memory through its geometric structuring.
13. Structured water freezes at a lower temperature.
14. A very simple test for measuring anomalous water is its freezing points.
15. Structured water increases minerals, medications or any other supplement absorption to 100 percent
16. Through the process of entrainment Structured Water continues its life giving properties long after its intended use.
17. Structured Water requires no physical energy required for hydration. Structured water in its perfection knows what is good for life and what is not by the negative & positive charges on each component.
18. 66,000 pollutants can be dissolved in water.
19. Water becomes dead water when run through 300 feet of straight pipe.

## THE NEGATIVE HYDROGEN ION

"Hydrogen is the fuel of life." All the food we eat does one thing for us. It releases hydrogen which is burned by oxygen in the final chemical reaction releasing the energy that makes ATP, the fuel that actually runs our bodies. Carbohydrates are one-third carbon, one-third hydrogen and one-third oxygen. We have enzymes in the body called *dehydrogenases* and their purpose is to loosen hydrogen on the food we eat so that the hydrogen (hydrogen is the fuel) can be burned by oxygen, releasing energy, and the carbon and oxygen left on the carbohydrate turns into carbon dioxide gas which we breathe out and the plants breathe that in. That is called the Krebs cycle. Hydrogen is the energy source that runs our bodies; it is the energy source that fuels the universe; it is the energy source that runs the sun. Hydrogen makes up 90 percent of the mass of the universe. Hydrogen is the carrier of electrons in the living system, and no electrons are carried anywhere in the living system unless it is attached to hydrogen. *Hydrogen is the carrier of all electrons in all chemical reactions.* Cells, proteins and tissues in our bodies store hydrogen in huge quantities in such a way that you don't need enzymes to use that hydrogen. And Hydrogen has a lot to do with cellular division itself and it is the secret of cellular division.

**Structured water is loaded with negative hydrogen ions.** The water at Baden Baden, Germany, and at Pagosa Springs, Colorado, both have a large quantity of negative hydrogen ions as well.

Tiny spherical form of silica is a natural mineral that is essential for the human body; sand is silica, quartz crystals are silica. Silica makes our bones and arteries strong. It is found in the places of our body where we need the most strength like the aorta. The silica that is found in Hunza water are little tiny spheres about 50 Angstroms in diameter, and they are only found in certain kinds of glacial water

### WATER IS THE

- Ultimate food
- Greatest medicine
- Most economical fuel & energy source

*Love is the greatest over unity device it gives more than one receives.*

**Venerated water sources – life giving properties & longevity**

## - Structured Water in Nature

- Hunza Valley in Northern Pakistan
- Lourdes in France
- Georgia Russia
- + many more World wide
  - They have essential bio-available minerals in solution
  - They are not absolutely pure
  - They are free from disease causing bacteria
  - They are structured – no physical body energy required for hydration
  - High O<sub>2</sub>    Oxygen two            Oxygenated
  - High H        Hydrogen
  - Low surface tension        45 Dynes/Cubic centimeter
  - Total dissolved solids (TDS) of 5 – appears cloudy

## Structured Water

- Anti aging health benefits
- Ion free
- Biologically free – in nature has bacteria always
- Memory free
- Temperature changes – be aware it changes the outcome
- Implosion – draws in energy around it
- Explosion – moves energy away
- Living energy – “analogy” a twisted electrical wires presents no loss, no resistance, no impedance loss “Calvin Coates”
- Water density high
- Gases – removes Nitrogen add back Noble gases to multi layer frequency’s
- Low surface tension less
- All in Nature’s Balance

## Biological view of a cell

Infant 86% water

Elderly 65% water

Human brain 96% water

This is determined by cells ability to receive water, when the cells walls are no longer flexible --aging begins. All living organisms contain Structured Water.

Sodium/Potassium pump moves H<sub>2</sub>O through cells

Extra cellular fluid depends on more available Oxygen

Inner cellular consumption depends on more available Hydrogen

**Measurement of Surface Tension measured in Dynes/cubic centimeter.**

Distilled water – surface waters are	72 - 78 Dynes/cubic centimeter	
Most bottled water	72 Dynes	“
Body heat	58 Dynes per cubic centimeter	
<b>Structured water to cross cell wall</b>	<b>46 Dynes</b>	<b>“</b>
Structured water Unit	43 Dynes	“
Structured Ultimate water	38 Dynes	“
Alcohol	28 Dynes	“

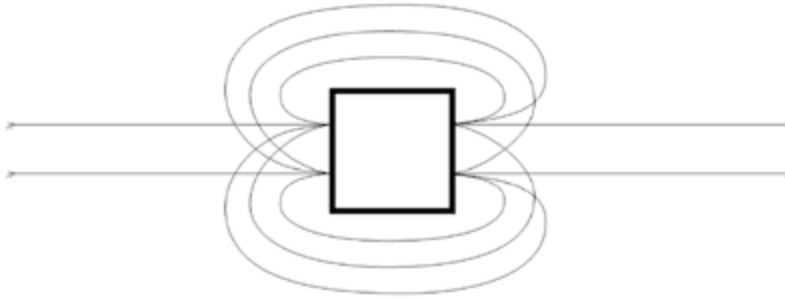
*Mytocondria      Electric circuit inside cell, life provider      main energy converter*

**Disassociation Principles**

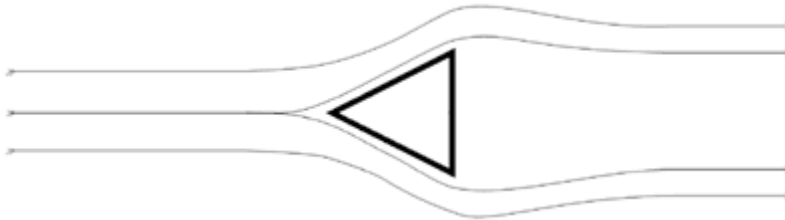
- Nature uses low energy to accomplish :
  - Cooperative subsystems
  - Predominantly Light based technology
  - Hydrostatic anode & cathode
  - No charged surfaces
  - Shortest path
  - Oxygen paramagnetic
  - Hydrogen Diamagnetic
  - Monatomic Hydrogen & oxygen yield

**Barrier Flows**

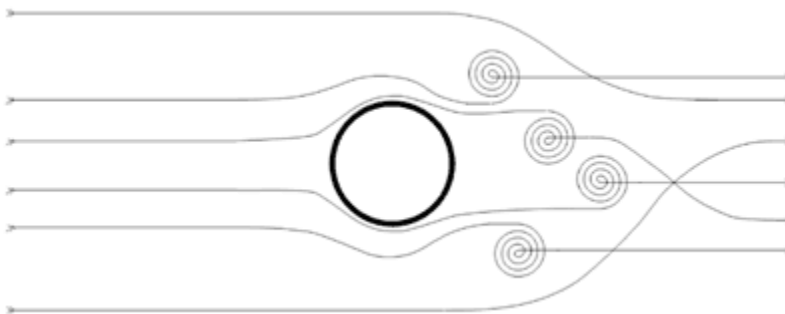
The presence of barriers can significantly enhance the measurement and utilization of flow (including the generation of power and time). Individual streams of progression begin at barriers, and there are three primary types utilized within our transformative algorithms:



**Poloidal:** rectangular (in the manner of a block) in nature, most prominent in application to physical / morphological / "body" domain, places those manifold elements contacting it in a state of flux, causes the examination and re-examination of the target subject of the barrier from all angles, all elements proximal to the same poloidal barrier necessarily form a sub-manifold within and through the flux of their activities, this often results in the establishment of new resources and new applications for existing resources



**Axial:** triangular (wedge-shaped) in nature, most prominent in application to mental / emotional / "mind" domain, requires that the manifold elements coming up against it go through a pivot, a decision point, with a "rigid" element this requires shifting one way or the other, while a more malleable element may divide itself among the two directions, this often results in branching off to establish more diverse or new directions of pursuit



**Vortexial:** circular in nature, most prominent in application to spiritual / intangible / "spirit" domain, causes inward recursion in the manifold elements that are flowing in proximity to it, those in proximity to it form vortexial eddy currents through their inward recursion, and additionally those close to the those eddy currents are drawn toward them, those subject to a vortexial barrier recurse further and further inward until they come to a point, at which time they continue to be carried forward by the flows of those elements surrounding them, this often results in purification and a strengthening of both capacity and capability

□ Poloidal

◁ Axial

○ Vortexial

## The Secret Solfeggio Frequencies:

## Sound Vibration Rates for Creation and Destruction

Then nine frequencies listed below can be programmed into one of the custom data banks on THE ULTIMATE B3 Frequency Generator. You can program all nine frequencies into one custom data bank and run all nine frequencies simultaneously, AND you can program all nine frequencies into another custom data bank and run them one at a time. (See THE ULTIMATE B3 Frequency Generator Operating Manual for instructions on how to do this.) Here is a suggested affirmation while using these frequencies: "I AM grateful for the easy and graceful healing transformation that is occurring in all of my bodies as a result of using these frequencies. I AM letting go of whatever does not serve the I AM that I AM."

### Table 1: The Nine Secret Solfeggio Frequencies.

1. 174 Hz = 174 = 3
2. 285 Hz = 285 = 6
3. 396 Hz Ut = 396 = 9
4. 417 Hz Re = 417 = 3 → (415 Hz to 417 Hz is a key energy balancing frequency range)
5. 528 Hz Mi = 528 = 6 → (528 Hz is known as the 'Miracle' Frequency)
6. 639 Hz Fa = 639 = 9
7. 741 Hz So = 741 = 3
8. 852 Hz La = 852 = 6
9. 963 Hz Ti = 963 = 9

These sound frequencies or electromagnetic vibrations (previously kept secret) are most likely to eventually be recognized as the primary frequencies associated with the matrix of creation and destruction. Please note that all nine frequencies are mathematically and harmonically related. Nine is the number of completion. Nikola Tesla said many times that there is tremendous power in the 3's, 6's, and 9's.

Table 1 shows the increasing frequencies encoded in the Torah and the Bible (Book of Numbers 7:12-83). Initially encrypted by Levi priests who translated the original Torah in Greek *Septuagint*, these nine frequencies apparently possess extraordinary spiritual power. In addition to their link to the hymn of St. John the Baptist and their likely association with creative and destructive events in the Bible, the third note - "Mi" for "Miracles" or "528" - is the exact frequency used by genetic engineers throughout the world to repair DNA. You can also program the following five frequencies from Table 2 and Table 3 into the custom data banks.

### Table 2: The Key of David/The Key of Libra/The Key of BALANCE and The GENESIS Frequency.

1. 360 Hz = 9 → (This is the Key of David Frequency which the ancient Carillon bells were tuned to)
2. 531 Hz = 9 → (This is the GENESIS Golden Healing Frequency given by Archangel Michael)

“The Key of David” or “The Key of Libra” (known in modern music as G flat or F#) is based on the Golden Section or Golden Mean. It is associated with a vibrational formula to bring gifts of joy, love, and healing. Pythagoras and the Science of Vibrational Medicine, today, confirm the Golden measures of Divine Proportion and the three witnesses of the balancing effects on Health in “The Key of David”. Pythagoras also theorized that the earth creates a tone in space of G flat or F#. NASA astronauts have since proven this to be correct using high-tech sound recording equipment. We will probably know with certainty, at some future time, that this represents the ageless wisdom of creation.

**Table 3: The Great Pyramid King’s Chamber Frequency, Royal Cubit Wave Form Frequency, and the Secret Concert Pitch.**

3. 441 Hz = 9 (441 Hz is the resonant frequency of the Great Pyramid King’s Chamber)
4. 144 Hz = 9 (144 Hz is the Royal Cubit (20.625”) Wave Form Frequency)
5. 432 Hz = 9 (432 Hz is a key Secret Concert Pitch Frequency)
6. 108 Hz = 9 (54 Hz is the “Breath of the Earth” and 108 Hz is the sacred Egyptian “Full Breath” Frequency)

**Table 4: Dinshah’s Color and Sound Equivalency Chart.**

Listed below are the Dinshah frequencies and their COLOR equivalents. These frequencies can easily be programmed into THE ULTIMATE Frequency Generator custom data banks. These frequencies can also be used with LED color therapy.

<u>Color</u>	<u>Color Frequency</u>	<u>Musical Note</u>	<u>Note Frequency</u>
Red	397.5 = 6	G	392 Hz
Orange	430.6 = 3	A	440 Hz
Yellow	464.5	A#	466 Hz
Lime	498 = 3	B	494 Hz
Green	531.5	C	523 Hz
Turquoise	565	C#	554 Hz
Blue	598.5 = 9	D	587 Hz
Indigo	632	D#	622 Hz
Violet	665.5	E	659 Hz
Purple	565*	A# and E	562* Hz
Magenta	531.5*	G and E	525* Hz
Scarlet	498*	G# and D	501* Hz

---

\*denotes reverse polarity. From: Dinshah GP. *Spectralchrometry Encyclopedia*. Third Edition.

Here is a suggested affirmation while using these frequencies:



“I AM grateful for the easy and graceful healing transformation that is occurring in all of my bodies as a result of using these frequencies. I AM letting go of whatever does not serve the I AM that I AM.”

CALCIUM & MAGNESIUM  
Brings balance to the sympathetic system

CALCIUM  
CA+

MAGNESIUM  
MG-

---

SODIUM & POTASIUM  
Brings balance to the parasympathetic system

SODIUM  
NA-

POTASIUM  
K+

+H O- H+  
Hackminite Soudalite  
Deuterium (Heavy Water) 2000 tons of water to make 2 ounces.

One acre of green corn returns 4000 gallons of water to the air / day.

4500 ft/sec speed of sound in water 7 time faster than in air

Deuterium Oxide is Heavy Water

**Questions / Answers: Clayton Nolte 970.946.5804**  
[claytonnolte@gmail.com](mailto:claytonnolte@gmail.com) [www.bestwaterbalance.com](http://www.bestwaterbalance.com)

**A reminder to the infinite possibilities**

**“There is more energy in one drop of water than all the power plants of the World have produced. When you burn water the residue is water.”**

**Victor Schauburger**